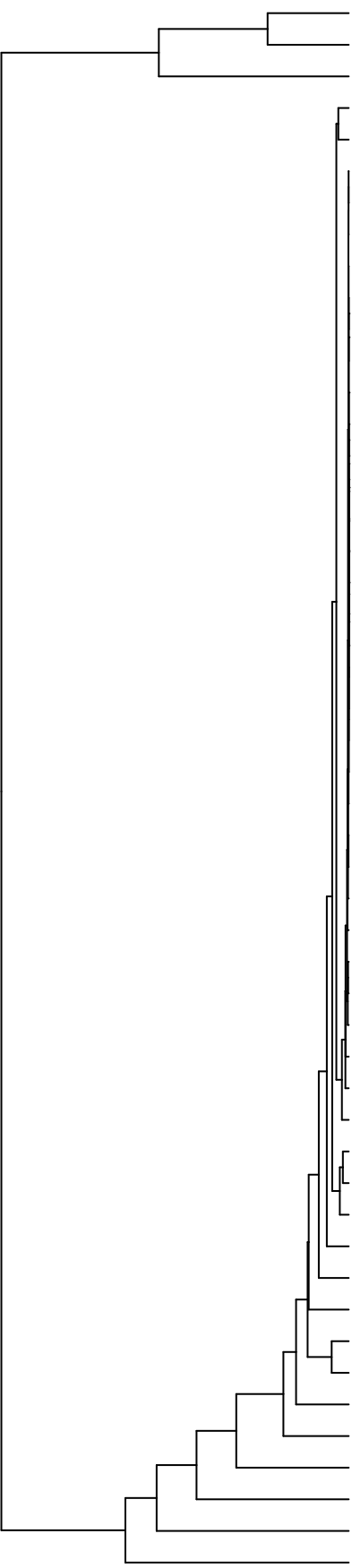


Group005
 Baseline
 Final H -PMA



- Veillonella
- Haemophilus
- Neisseria
- Gemella
- Prevotella
- Lachnoanaerobaculum
- Lancefieldella
- Absconditabacteria_(SR1)_[G-1]
- Saccharibacteria_(TM7)_[G-6]
- Novosphingobium
- Acinetobacter
- Phyllobacterium
- Mycolicibacterium
- Lachnospiraceae_[G-2]
- Pseudomonas
- Serratia
- Leifsonia
- Sphingobium
- Microbacterium
- Siccationidurans
- Agrobacterium
- Acidovorax
- Cutibacterium
- Delftia
- Riemerella
- Capnocytophaga
- Catonella
- Oribacterium
- Actinomyces
- Lautropia
- Solobacterium
- Saccharibacteria_(TM7)_[G-1]
- Stomatobaculum
- Alloprevotella
- Leptotrichia
- Staphylococcus
- Eikenella
- Schaalia
- Granulicatella
- Aggregatibacter
- Rothia
- Fusobacterium
- Campylobacter
- Porphyromonas
- Salmonella
- Raoultella
- Klebsiella
- Enterobacter
- Streptococcus
- Citrobacter

- F-28914_S603
- F-28914_S450
- F-28914_S452
- F-28914_S602
- F-28914_S449
- F-28914_S601
- F-28914_S294
- F-28914_S296
- F-28914_S132
- F-28914_S131
- F-28914_S292
- F-28914_S289
- F-28914_S133
- F-28914_S136
- F-28914_S053
- F-28914_S054
- F-28914_S051
- F-28914_S029
- F-28914_S026
- F-28914_S027
- F-28914_S047
- F-28914_S046
- F-28914_S048
- F-28914_S070
- F-28914_S072
- F-28914_S071
- F-28914_S066
- F-28914_S060
- F-28914_S059
- F-28914_S033
- F-28914_S036
- F-28914_S041
- F-28914_S040
- F-28914_S042
- F-28914_S061
- F-28914_S063
- F-28914_S065

Samples

Genus